

PROJECT BACKGROUND

Valley Line West LRT Utility Relocations (2019-2022)

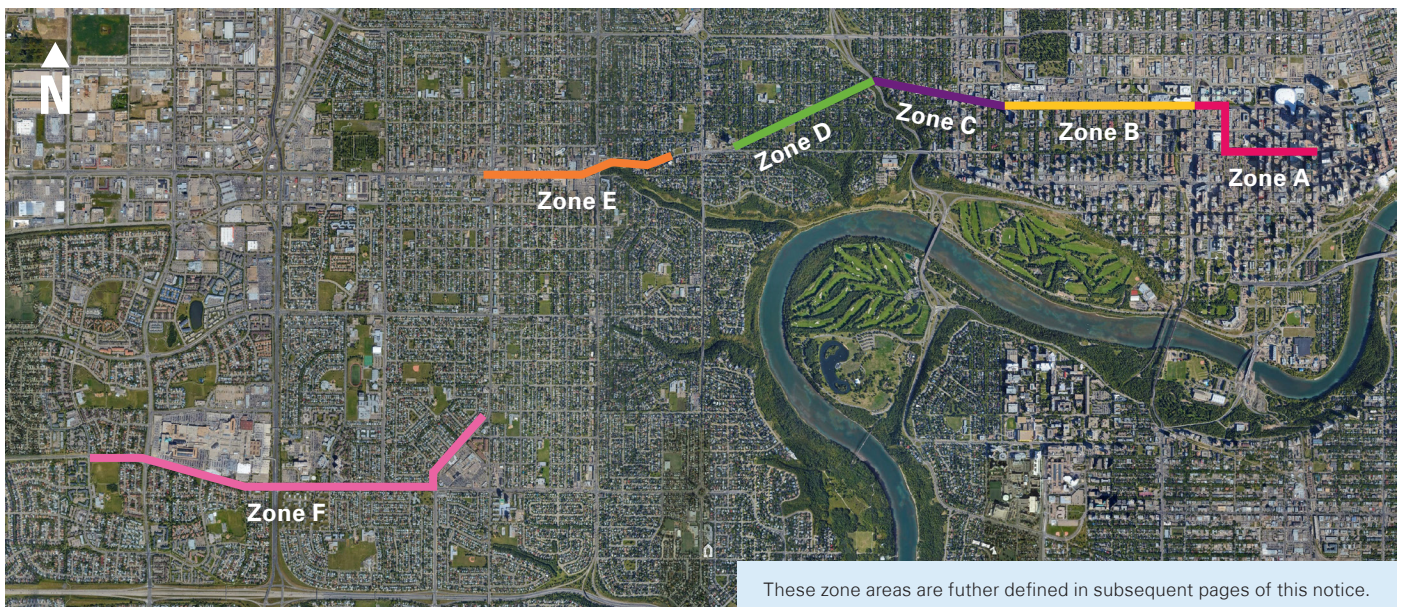
PROJECT OVERVIEW

As part of the Valley Line West LRT project, EPCOR is responsible for relocating all the power, water and drainage utilities to avoid potential conflicts with the future Valley Line West LRT infrastructure. This is the second stage of the Valley Line, an urban-style 27km line that will operate between Mill Woods in southeast Edmonton and Lewis Farms in west Edmonton. EPCOR Valley Line West LRT projects began in 2019 and will continue through the end of 2022.

To meet the overall LRT project schedule, the City has requested that EPCOR perform the utility relocations within specific areas along the alignment prior to LRT construction.

The work includes the construction of a new drainage tunnel, replacing the existing infrastructure which was constructed in the 1930's and improving reliability. Power infrastructure will also undergo upgrades to maintain reliability and see some infrastructure converted from aerial to underground in some locations. Water mains will be replaced, improving the standard and reducing the risk of main breaks.

OVERALL PROJECT AREA



PROJECT AREA AND NOTIFICATION

This project is broken down geographically into six zones which follow the alignment of the relocations from east to west. The relocations may occur in any of these geographic areas along the Valley Line LRT alignment from the start to the end of the project (2020-2022).

- Zone A – 101 Street to 109 Street & 105 Avenue to Jasper Avenue
- Zone B – 104 Avenue from 109 Street to 121 Street
- Zone C – Stony Plain Road from 121 Street to 129 Street
- Zone D – Stony Plain Road from Groat Road to 138 Street
- Zone E – Stony Plain Road from 142 Street to 156 Street
- Zone F – 87 Avenue from 156 Street to 184 Street

This notice is being delivered to all residents and businesses in the zones identified above. Going forward, further notifications will be mailed to residents and businesses in the immediate zone where the work is occurring. All zone updates are available at epcor.com/valleyline.

WORK ACTIVITIES

You may see some of the following work activities in your area.



Micro-Tunneling

Micro-Tunneling is a method used to construct new sewer sewer tunnels. First a large shaft (about 9-12 metres in diameter and 8 metres deep) is built which will facilitate lowering of a Tunnel Boring Machine (TBM) into the ground. The TBM then grinds through soil and other ground conditions underground along the alignment of the new tunnel. Pipe is then installed behind the micro-tunneling machine to create the tunnel.

The tunneling process occurs underground; however, shafts are required at the surface along the alignment of the tunnel. These shafts are placed at engineered start and end points (used to retrieve or turn the TBM). Due to the size of the shaft locations, impacts usually include road/sidewalk closures. A large machine used to manage soil will also be on site at some shaft locations.



Open Trench Construction/Excavation

Open trench construction is a method in which surface area is excavated to install new infrastructure. Most of the work for this project will include this type of construction, including the installation of underground power installation, installation of new drainage infrastructure and water main relocations.

Open trench construction requires a large trenched area; therefore, impacts usually include road and/or sidewalk closures. Due to the amount of material required, there is often a laydown area that needs to be incorporated onto the site, which may cause a large portion of a road and/or sidewalk to be closed, or disrupt a greenspace area which may be used for public recreation.

Water Main Relocation

Water main relocation work is a type of open trench excavation where an existing water main is moved to an alternate location.

In addition to the activities associated with open trench excavation, customers affected by water main relocations may require a temporary water connection supplied by EPCOR while work is ongoing.

Directional Drilling

Directional drilling will be used to install new underground electrical infrastructure. This method is used in an effort to minimize the amount of ground disturbance to an area or for crossing large roads, bodies of water, and where open-cut is not feasible. Holes are drilled and power conduit will be pulled through the holes.

COVID-19

While EPCOR has suspended some in-person services to protect our teams and customers, critical work continues with additional health and safety protocols in place. Timelines for this work are subject to change based on developments associated with COVID-19. Updates will be provided on epcor.com.

PROJECT IMPACTS

Please note, further zone notification will be provided before work begins and will include details of traffic impacts, timelines and schedule when possible.

Traffic

- Depending on the work location, residents and businesses can expect to see activity that is typical to construction, including company/contractor vehicles and equipment.
- Road/lane and sidewalk closures should be anticipated. Signage will indicate closures and detours along with parking restrictions.
- We will work with the City of Edmonton to relocate bus stops as needed.
- Construction vehicles and tandem dump trucks used for hauling along roadways in work areas.

Outages

- Depending on your location along the route you may experience a water outage during the course of the planned construction work. If we have to shut off the water main temporarily during construction, you will receive written notice at least 24 hours in advance. Water service will typically resume within eight hours.

- If we need to shut off your water during construction for longer than eight hours, we will provide you with a temporary above ground water supply. There will be no consumption charge for water provided through the temporary line. You will only pay the monthly basic charge for water supply and any water consumption provided by regular metering service.
- Planned power outages may be necessary. Outages may be between eight to 12 hours at a time and residents will be notified 10 days prior to a scheduled outage.

Noise

- Work will create typical noise associated with construction. We will take measures to ensure compliance with the City of Edmonton's Community Standards Bylaw for Noise Control.
- Work outside the noise bylaw hours may occur. More information will be distributed as if noise will occur outside bylaw hours.

Laydown Areas

- Four laydown areas for material storage are required for this project. Material will be transported to and from these areas for the duration of the construction activities. The laydown areas will be established in mid-August and will be used until the project is completed (approximately 2022). Information on these locations can be found on the Zone D map in this notice.

ZONE A: 101 STREET TO 109 STREET & JASPER AVENUE TO 105 AVENUE

Water – Water Main Relocation

Water main relocation work has already begun along 107 Street from 102 Avenue to 104 Avenue and is expected to be completed by the Fall.

Power – Open Trench Construction

Power underground infrastructure work has already begun along 102 Avenue and is expected to be completed by the Fall.



ZONE B: 104 AVENUE FROM 109 STREET TO 121 STREET

Drainage – Micro-Tunneling

Three shaft locations will be utilized in this area to facilitate construction of a new Drainage tunnel. The locations and estimated timelines are:

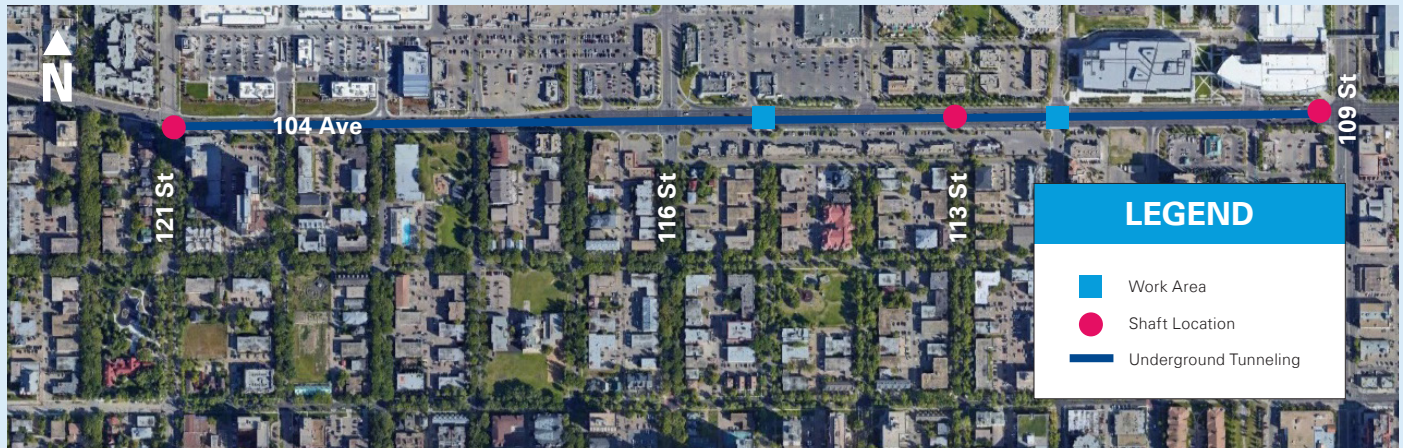
- 104 Avenue west of 109 Street – anticipated to start in late 2021
- 104 Avenue at 113 Street – anticipated to start in early 2021
- 104 Avenue at 121 Street – anticipated to start in early 2021

Power - Directional Drilling

Overhead lines will be buried underground and new electrical infrastructure will be installed on 104 Avenue west of 112 Street. The work is anticipated to start in the early Fall and be completed by late Fall 2020.

Water – Fire Hydrant Relocation

A fire hydrant will be relocated along 104 Avenue at 115 Street. The work is anticipated to start in October 2020 is expected to take three weeks to complete.



ZONE C: STONY PLAIN ROAD FROM 121 STREET TO 129 STREET

Drainage – Open Trench Excavation

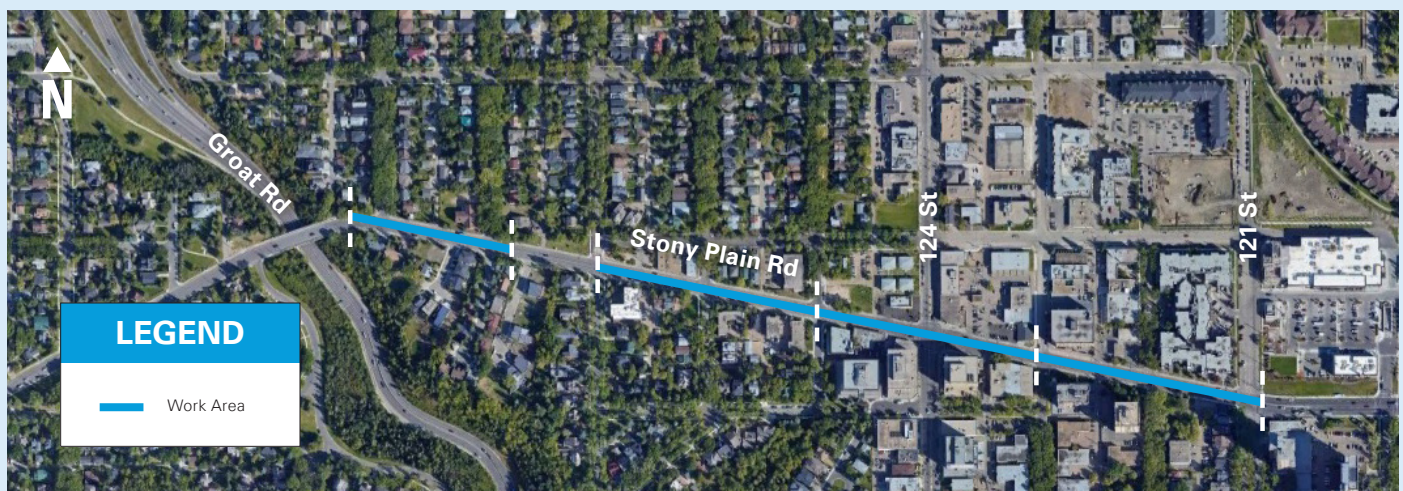
Drainage will be performing open trench excavations to install a new infrastructure. The locations and estimated timelines are:

- Stony Plain Road from 129 Street to Sylvancroft Lane – anticipated to start in August 2020

- Stony Plain Road from 127 Street to 125 Street – anticipated to start in August 2020
- Stony Plain Road from 125 Street to 123 Street – anticipated to start in 2021
- Stony Plain Road from 123 Street to 121 Street – anticipated to start in 2022

Water – Water Main Relocation

Water main relocation work has already begun along Stony Plain Road and along some side streets north and south of Stony Plain Road.



ZONE D: STONY PLAIN ROAD FROM GROAT ROAD TO 138 STREET

Drainage – Micro-Tunneling

Four shaft locations will be utilized in this area to facilitate construction of a new Drainage tunnel. The locations and estimated timelines are:

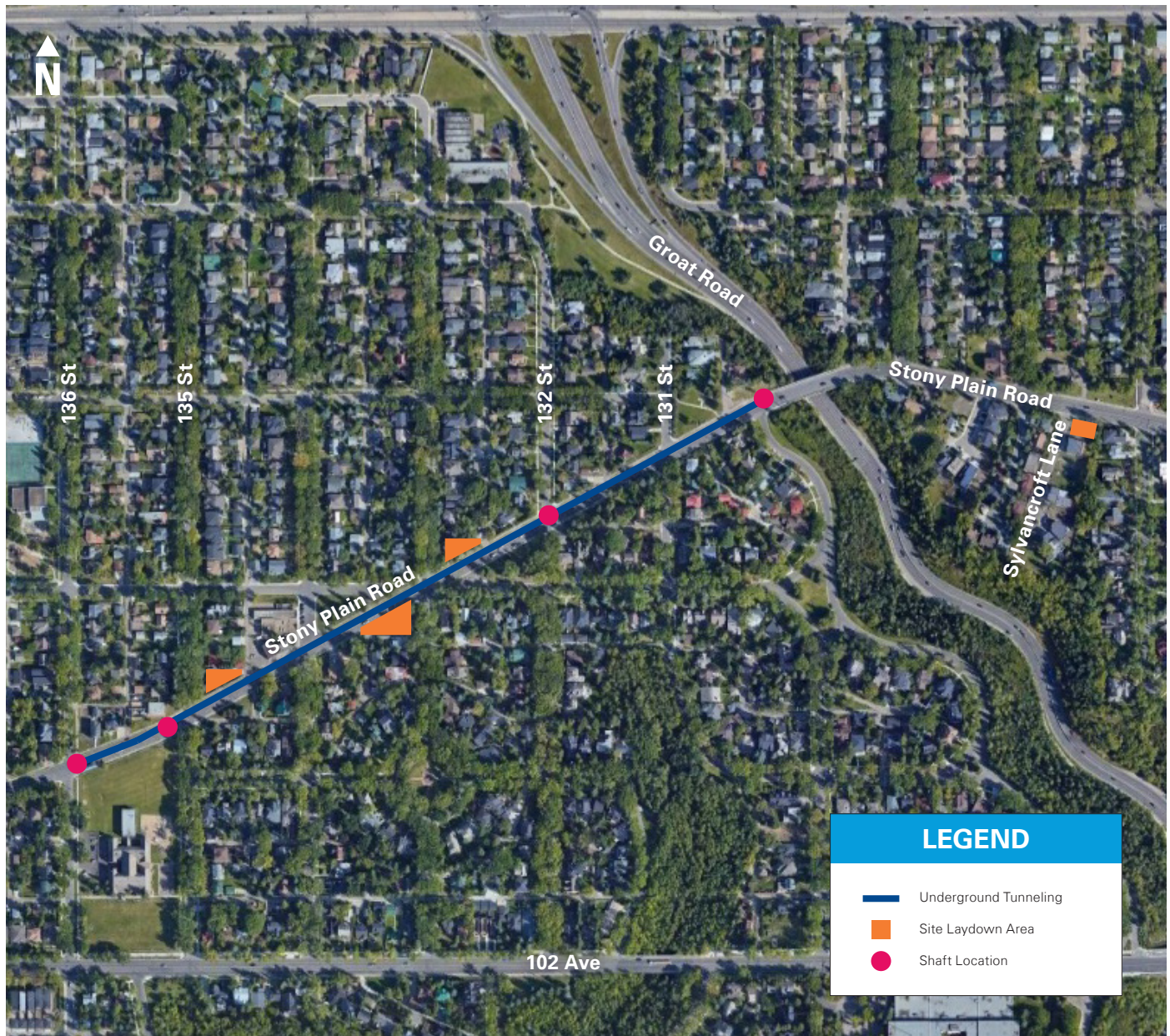
- Stony Plain Road west of Groat Road Bridge – anticipated to start in late 2021
- Stony Plain Road west of 132 Street – anticipated to start in early 2021
- Stony Plain Road west of 135 Street – anticipated to start in fall 2020
- Stony Plain Road west of 136 Street – anticipated to start in fall 2020

Water – Water Main Relocation

Water main relocation work has already begun along Stony Plain Road and along some side streets north and south of Stony Plain Road. Some of the water relocations planned north of Stony Plain Road along 104 Ave and in some residential areas will be deferred to 2021. The work that has already been initiated north of Stony Plain Road will be completed this construction season. The water relocation work along and south of Stony Plain Road will also be finished this summer.

LAYDOWN AREA LOCATIONS:

- 10327 135 Street
- 10348 133 Street
- 10403 133 Street NW
- South of Stony Plain Road and East of Sylvancroft Lane



ZONE E: STONY PLAIN ROAD FROM 142 STREET TO 156 STREET

Power – Directional Drilling

Overhead lines will be buried underground and new electrical infrastructure will be installed. This work is anticipated to start in the early fall and is expected to be completed by late fall. The locations are:

- Stony Plain Road at 156 Street
- Stony Plain Road at 143 Street

Drainage – Other work in the area

EPCOR Drainage will also perform spot relining work in this area. This work is not expected to have any traffic impacts.

In addition, Drainage work is currently being performed in this area for the 99 Avenue Sanitary Trunk Rehabilitation Project and the MacKinnon Ravine Storm Upgrade Project, which are unrelated to the LRT work. For the specific project notice, please visit epcor.com/99Ave.



ZONE F: 87 AVENUE FROM 156 STREET TO 184 STREET

Power – Directional Drilling

New electrical infrastructure will be installed. Work has already begun at 87 Avenue and 161 Street and at 87 Avenue from 170 to 175 Street and is expected to be completed by the end of August.

Work is anticipated to begin at 87 Avenue and 159 Street in the early fall and is expected to be completed by late fall.

Please note, further smaller electricity excavation work will occur in spots along 83 Avenue and 156 Street from the late summer to fall 2020.



FOR MORE INFORMATION

EPCOR

Phone: 780-412-4200

Email: EPCORprojects@epcor.com

Website: epcor.com/valleyline

For all zone project notices, visit epcor.com/valleyline.